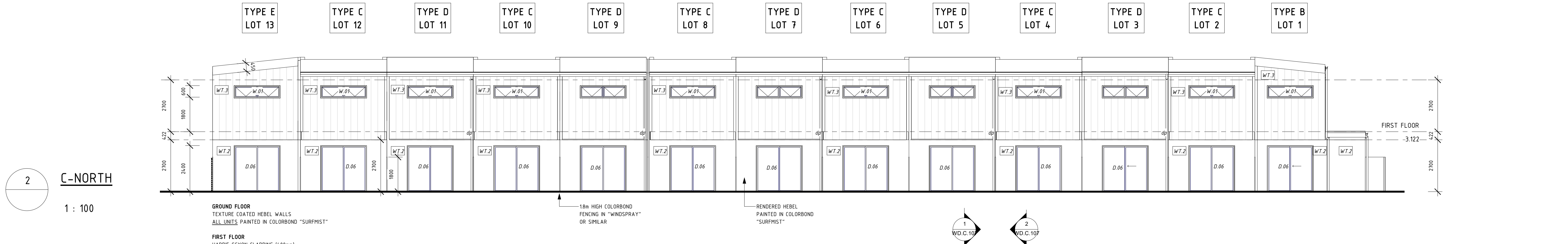


**PAINTING/COLOR SCHEDULE**  
**ALL UNITS**  
- BRICK VENEER (WT.1) IN RECLAIMED RED BRICK TO GARAGE WALLS AND WHERE LABELLED/DETAILED  
**TOWNHOUSE TYPE B, D & E**  
- COLORBOND "SHALE GREY" TO GARAGE ROLLER DOOR, PAINTED FRONT DOOR AND PAINTED FIRST FLOOR SCYON CLADDING  
- COLORBOND "SURFMIST" TO RENDERED BLUEBOARD PARAPETS AND SURROUNDS AND ANY OTHER RENDERED SURFACES.

**TOWNHOUSE TYPE C**  
- COLORBOND "MONUMENT" TO GARAGE ROLLER DOOR, PAINTED FRONT DOOR AND PAINTED FIRST FLOOR SCYON CLADDING  
- COLORBOND "MONUMENT" TO RENDERED BLUEBOARD PARAPETS AND SURROUNDS AND ANY OTHER RENDERED SURFACES.

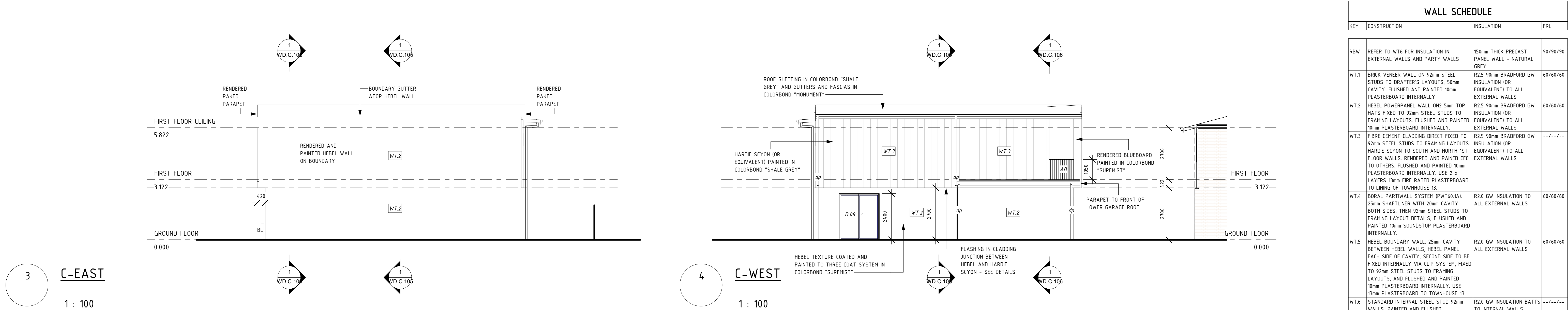
**ROOF**  
COLORBOND ROOF SHEETING (TL5 OR SIMILAR SUITABLE FOR 3° PITCH)  
- COLOUR "SHALE GREY"  
GUTTERS AND FASCIAS IN COLORBOND "MONUMENT"



**GROUND FLOOR**  
TEXTURE COATED HEBEL WALLS  
ALL UNITS PAINTED IN COLORBOND "SURFMIST"

**FIRST FLOOR**  
HARDIE SCYON CLADDING (400mm)  
TOWNHOUSE TYPE B, D & E PAINTED IN COLORBOND "SHALE GREY"  
TOWNHOUSE C PAINTED IN COLORBOND "WINDSPRAY"

**ROOF**  
COLORBOND ROOF SHEETING (TL5 OR SIMILAR SUITABLE FOR 3° PITCH)  
COLOUR "SHALE GREY"  
GUTTERS AND FASCIAS IN COLORBOND "MONUMENT"



WALL SCHEDULE			
KEY	CONSTRUCTION	INSULATION	FRL
RBW	REFER TO WT.6 FOR INSULATION IN EXTERNAL WALLS AND PARTY WALLS	150mm THICK PRECAST PANEL WALL - NATURAL GREY	90/90/90
WT.1	BRICK VENEER WALL ON 92mm STEEL STUDS TO DRAFTER'S LAYOUTS, 50mm CAVITY, FLUSHED AND PAINTED 10mm PLASTERBOARD INTERNALLY	R2.5 90mm BRADFORD GW INSULATION (OR EQUIVALENT) TO ALL EXTERNAL WALLS	60/60/60
WT.2	HEBEL POWERPANEL WALL ON2 5mm TOP HATS FIXED TO 92mm STEEL STUDS TO FRAMING LAYOUTS, FLUSHED AND PAINTED 10mm PLASTERBOARD INTERNALLY	R2.5 90mm BRADFORD GW INSULATION (OR EQUIVALENT) TO ALL EXTERNAL WALLS	60/60/60
WT.3	FIBRE CEMENT CLADDING DIRECT FIXED TO 92mm STEEL STUDS TO FRAMING LAYOUTS, HARDIE SCYON TO SOUTH AND NORTH 1ST FLOOR WALLS, RENDERED AND PAINTED CFC TO OTHERS, FLUSHED AND PAINTED 10mm PLASTERBOARD INTERNALLY, USE 2 x LAYERS 13mm FIRE RATED PLASTERBOARD TO LINING OF TOWNHOUSE 13	R2.5 90mm BRADFORD GW INSULATION (OR EQUIVALENT) TO ALL EXTERNAL WALLS	--/--/--
WT.4	BORAL PARTIAL SYSTEM (PWT60.1A) 25mm SHAFTLINER WITH 20mm CAVITY, BOTH SIDES, THEN 92mm STEEL STUDS TO FRAMING LAYOUT DETAILS, FLUSHED AND PAINTED 10mm SOUNDSTOP PLASTERBOARD INTERNALLY	R2.0 GW INSULATION TO ALL EXTERNAL WALLS	60/60/60
WT.5	HEBEL BOUNDARY WALL, 25mm CAVITY BETWEEN HEBEL WALLS, HEBEL PANEL EACH SIDE OF CAVITY, SECOND SIDE TO BE FIXED INTERNALLY VIA CLIP SYSTEM, FIXED TO 92mm STEEL STUDS TO FRAMING LAYOUTS, AND FLUSHED AND PAINTED 10mm PLASTERBOARD INTERNALLY, USE 13mm PLASTERBOARD TO TOWNHOUSE 13	R2.0 GW INSULATION TO ALL EXTERNAL WALLS	60/60/60
WT.6	STANDARD INTERNAL STEEL STUD 92mm WALLS, PAINTED AND FLUSHED PLASTERBOARD EACH SIDE	R2.0 GW INSULATION BATTS TO INTERNAL WALLS	--/--/--

This drawing shows design features and dimensions of a building. It is not to be used for construction without the approval of the designer. If used for construction, it is the responsibility of the contractor to ensure that the building is constructed in accordance with the design and dimensions shown on this drawing.

ISSUE #	DATE	DESCRIPTION
PD1	15/04/2019	PRELIMINARY WORKING DRAWINGS
PD2	23/04/2019	ISSUE FOR BRC APPROVAL
A	30/07/2019	FOR BRC & TENDER
B	22/03/2020	ISSUE W.D.B + W.D.C. TOWNHOUSES FOR CONSTRUCTION

**PROJECT ADDRESS**  
82 - 90 JOHNS ROAD, PROSPECT SA 5082

**CLIENT**  
82 JOHNS ROAD PTY LTD



**SHEET**  
ELEVATIONS

WD.C.104

**AUTHOR**  
GB

**CURRENT REVISION**  
ISSUE W.D.B + W.D.C. TOWNHOUSES FOR CONSTRUCTION

**ISSUE DATE**  
22/03/2020

FOR CONSTRUCTION

